



Arnside
Stapleford, Nottingham NG9 7EY

A THREE BEDROOM SEMI DETACHED
HOUSE

£230,000 Freehold



An extended three bedroom semi detached house.

Situated in this prime residential location, the property has the enjoyment of backing onto Archer's Field, an open recreation space. The location is suited for families and commuters alike as schools for all ages are within walking distance including Fairfield and George Spencer Academies*. For those looking to commute, the A52 is a couple of minute's drive away which links Nottingham and Derby, as well as Junction 25 of the M1 motorway. Also within a couple of minute's drive is the park and ride for the Nottingham express tram linking Nottingham University, Queen's Medical Centre, as well as Nottingham and other destinations.

The property is centrally heated by a combination boiler and double glazed throughout. The accommodation is surprisingly spacious comprising entrance porch, hallway, through lounge/diner and extended fitted kitchen. To the first floor, the landing provides access to three well proportioned bedrooms and family bathroom. There is also a useful attic space.

Off-street parking is provided at the front and there is a driveway running along the side of the property to a single brick built garage. The rear gardens compliment the property with patio and lawn, and backing onto open space.

The property is available with NO UPWARD CHAIN.

Whilst requiring some improvement internally, the property offers fantastic potential to make into a long term family home.



ENTRANCE PORCH

Double glazed window and front entrance door. Further double glazed window and door leading to the hallway.

HALLWAY

Radiator, stairs to the first floor.

LOUNGE/DINER

23'3" x 11'11" reducing to 9'11" (7.11 x 3.65 reducing to 3.04)

Two radiators, double glazed window to the front, double glazed patio door to the rear.

KITCHEN

16'10" x 7'10" (5.14 x 2.41)

Range of fitted wall, base and drawer units, with work surfacing and stainless steel sink unit with single drainer. Built-in electric oven, gas hob and extractor hood over. Plumbing and space for washing machine, further appliance space. Walk-in pantry and cupboard housing a gas combination boiler (for central heating and hot water). Double glazed window and door to rear.

FIRST FLOOR LANDING

Double glazed window. Doors to the bedrooms, bathroom and access to an inner lobby with stairs leading to the attic space.

BEDROOM ONE

12'4" x 11'8" (3.76 x 3.57)

Fitted wardrobes, radiator, double glazed window to the front.

BEDROOM TWO

14'4" x 7'9" (4.37 x 2.38)

Radiator, double glazed windows to the side and rear.

BEDROOM THREE

9'10" x 6'5" (3.01 x 1.98)

Radiator, double glazed window to the rear.

BATHROOM

Three piece suite comprising wash hand basin, low flush WC, bath with central mixer tap and electric shower over. Heated towel rail, built-in linen cupboard, double glazed window.

ATTIC SPACE

18'3" x 9'8" (5.57 x 2.96)

Velux double glazed roof light. Eaves storage space. This attic space is accessed from a dog-leg staircase leading from the enclosed inner lobby off the landing. We believe this conversion was carried out in the 1980's, however there is no documentation to support the conversion.

OUTSIDE

The property is set back from the road with a walled and fenced in front garden. The paved driveway provides off-street parking with wrought iron gates. The driveway leads down the side of the property to a detached brick built garage. The rear gardens are enclosed with a patio area beyond the patio doors which lead out onto the main garden which is laid to lawn, flanked with shrub borders with an area behind the garage. The rear boundary backs onto Archer's Field.

*AGENTS NOTE

* We recommend any intending purchaser makes their own enquiries as to the current admission policies of the schools named.

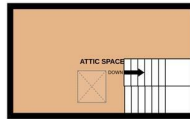




GROUND FLOOR
523 sq.ft. (48.4 sq.m.) approx.

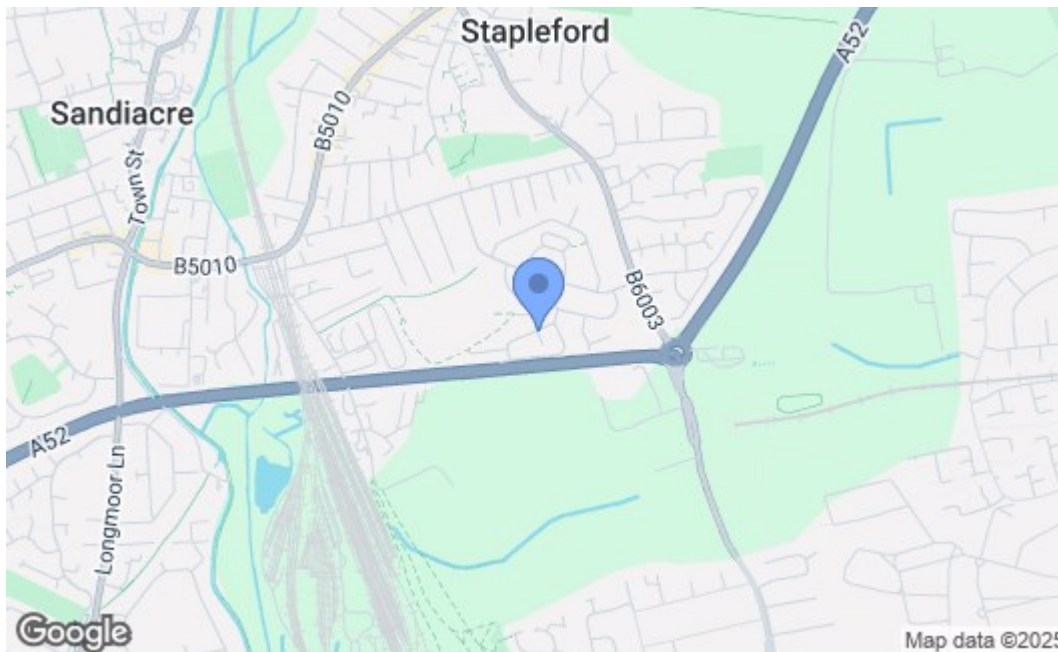
1ST FLOOR
504 sq.ft. (46.6 sq.m.) approx.

2ND FLOOR
188 sq.ft. (17.3 sq.m.) approx.



TOTAL FLOOR AREA - 1213 sq.ft. (112.7 sq.m.) approx.

Whilst every attempt has been made to ensure the accuracy of the footprint contained here, measurements of floors, windows, doors and any other items are approximate and no responsibility is taken for any error, omission or mis-statement. This plan is for illustrative purposes only and should be used in such by any prospective purchaser. The services, systems and appliances shown have not been tested and no guarantee as to their operability or efficiency can be given.
Made with Metropix C2025



| Energy Efficiency Rating | | Current | Potential |
|---|--|-------------------------|-----------|
| Very energy efficient - lower running costs | | | |
| (92 plus) A | | | |
| (81-91) B | | | |
| (69-80) C | | | 77 |
| (55-68) D | | 57 | |
| (39-54) E | | | |
| (21-38) F | | | |
| (1-20) G | | | |
| Not energy efficient - higher running costs | | | |
| England & Wales | | EU Directive 2002/91/EC | |
| Environmental Impact (CO ₂) Rating | | Current | Potential |
| Very environmentally friendly - lower CO ₂ emissions | | | |
| (92 plus) A | | | |
| (81-91) B | | | |
| (69-80) C | | | |
| (55-68) D | | | |
| (39-54) E | | | |
| (21-38) F | | | |
| (1-20) G | | | |
| Not environmentally friendly - higher CO ₂ emissions | | | |
| England & Wales | | EU Directive 2002/91/EC | |

These details are for guidance only and complete accuracy cannot be guaranteed. If there is any point, which is of particular importance, verification should be obtained. All measurements are approximate. No guarantee can be given with regard to planning permissions or fitness for purpose. No apparatus, equipment, fixture or fitting has been tested.